

DUPLEX 55 GALLON GLYCOL FEED UNIT



Duplex glycol feed units are designed to provide an automated supply of water-glycol mix to two separate cooling or heating closed loop systems. Units are factory engineered, assembled and tested with easy plug and run capability. Units are compact and self-contained with a small footprint for ease of installation and operation.

Standard Features

UL/CUL 508A Control Panel

Factory wired including type 4x enclosure. Audible alarm for low level. Selector switches with pilot lights for power, pump and alarm.

Pressure Pump

1/3HP 2 GPM @ 100PSI with built-in inlet strainer.

Low Level Cut-out Float Switch

System shut-down to prevent pump from running dry with visual and audible alarm including dry contacts for remote alarm.

55 Gallon Tank

Tank is heavy duty polyethylene with graduated capacity scale, hinged cover and is supported on a powder coated structural steel support stand.

Brass Discharge and Suction Piping

Includes high pressure relief valve, pressure switches, check valves, pressure gauges and suction isolation valves.

Options

AMT

Timed mixing loop

ET

Expansion tank 2 gallon

SET

Expansion tank 2 gallon stainless steel

HFP

High flow pump 4.5 GPM @ 100psi

HLA

High level alarm

ALT

Pump alternation (duplex units only)

ET-PRV

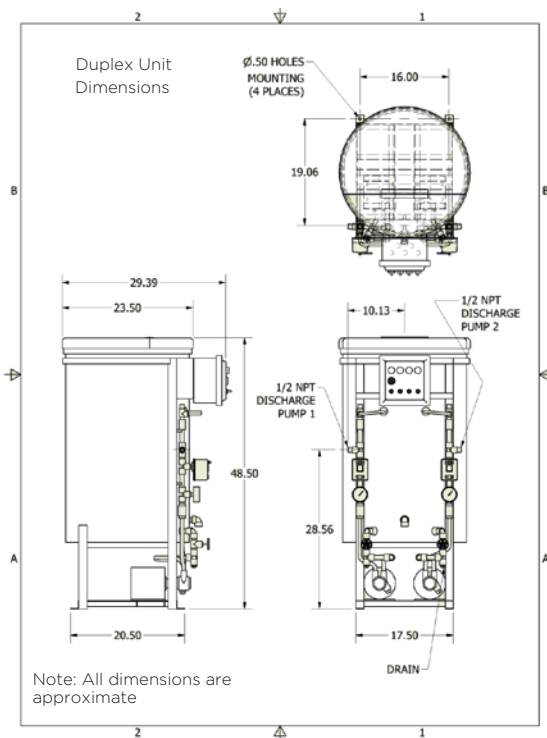
Expansion tank with PRV 8-50psi

Specifications

MODEL	SIZE	HP	VOLTAGE	PRESSURE
D-55-100-2-PEFS	Duplex	(2) 1/3hp	110v / 1PH / 60hz	Cut in 10-45 PSI / 10-30 PSI Differential

Model Number

D-55-100-2-PEFS



- 1 TANK POLYETHYLENE 55 GALLONS
- 2 COVER POLYETHYLENE HINGED
- 3 ELECTRICAL PANEL UI/CUL 508A
- 4 BASE ASSEMBLY
- 5 PUMP 1 ASSEMBLY
- 6 SUCTION ISOLATION VALVE - PUMP 1
- 7 CHECK VALVE - PUMP 1
- 8 PRESSURE GAUGE - PUMP 1
- 9 PRESSURE SWITCH - PUMP 1
- 10 PRESSURE RELIEF VALVE - PUMP 1
- 11 FLOAT SWITCH (LOW WATER)
- 12 PUMP 2 ASSEMBLY
- 13 SUCTION ISOLATION VALVE - PUMP 2
- 14 CHECK VALVE - PUMP 2
- 15 PRESSURE GAUGE - PUMP 2
- 16 PRESSURE SWITCH - PUMP 2
- 17 PRESSURE RELIEF VALVE - PUMP 2

