

SIMPLEX 100 GALLON GLYCOL FEED UNIT



Glycol feed units are designed to provide an automated supply of water-glycol mix to a cooling or heating closed loop system. Units are factory engineered, assembled and tested with easy plug and run capability. Units are compact, self-contained with a small footprint for ease of installation and operation.

Standard Features

UL/CUL 508A Control Panel

Factory wired including type 4x enclosure. Audible alarm for low level. Selector switches with pilot lights for power, pump and alarm. 9' incoming power cord with plug.

Pressure Pump

1/3HP 2 GPM @ 100PSI with built-in inlet strainer.

Low Level Cut-out Float Switch

System shut-down to prevent pump from running dry with visual and audible alarm including dry contacts for remote alarm.

100 Gallon Tank

Tank is heavy duty polyethylene with graduated capacity scale, removable cover and is supported on a powder coated structural steel support stand.

Brass Discharge and Suction Piping

Includes high pressure relief valve, pressure switch, check valve, pressure gauge and suction isolation valve.

Options

AMT

Timed mixing loop

ET

Expansion tank 2 gallon

SET

Expansion tank 2 gallon stainless steel

HFP

High flow pump 4.5 GPM @ 100psi

HLA

High level alarm

ALT

Pump alternation (duplex units only)

ET-PRV

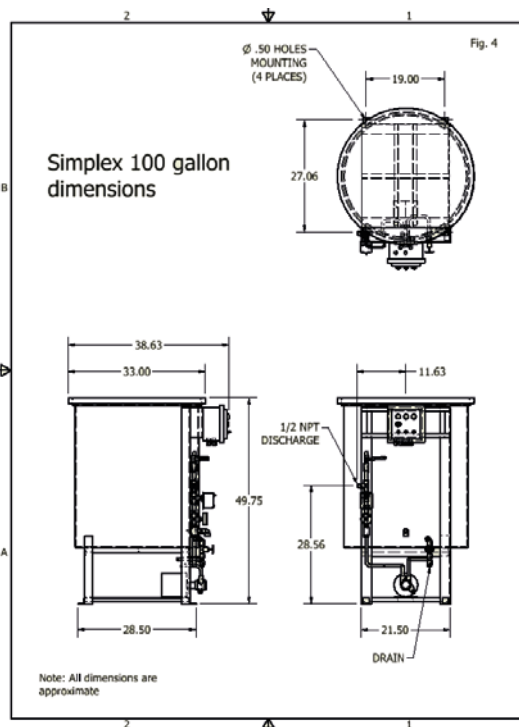
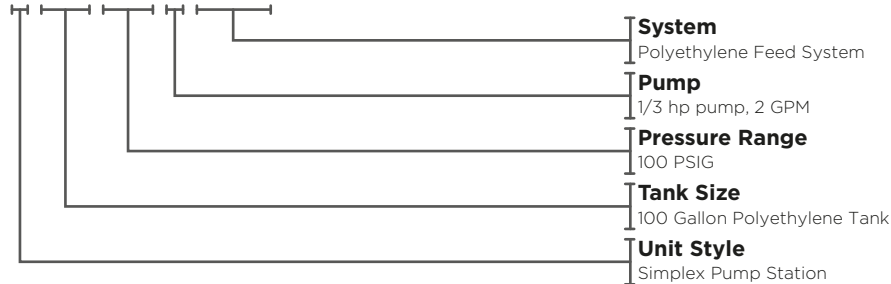
Expansion tank with PRV 8-50psi

Specifications

MODEL	SIZE	HP	VOLTAGE	PRESSURE
D-100-100-2-PEFS	Simplex	(1) 1/3hp	110v / 1PH / 60hz	Cut in 10-45 PSI / 10-30 PSI Differential

Model Number

S-100-100-2-PEFS



- Fig. 5
- 1 PUMP MOTOR ASSEMBLY
 - 2 TANK POLYETHYLENE 100 GALLONS
 - 3 COVER POLYETHYLENE
 - 4 ELECTRICAL PANEL UL/CUL 508A
 - 5 BASE ASSEMBLY
 - 6 PRESSURE RELIEF VALVE
 - 7 PRESSURE SWITCH
 - 8 PRESSURE GAUGE
 - 9 CHECK VALVE
 - 10 FLOAT SWITCH (LOW LEVEL)
 - 11 SUCTION ISOLATION VALVE

