

VE-XO™ | D-POT®

The Stainless Steel Shot Feeder Built for Modern Closed-Loop Systems

Safe, fast, standards-compliant chemical dosing for water systems.



PRODUCT OVERVIEW & APPLICATIONS

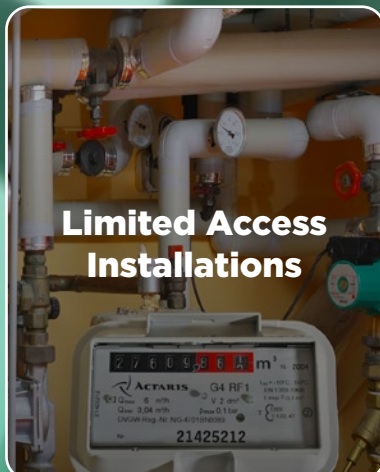
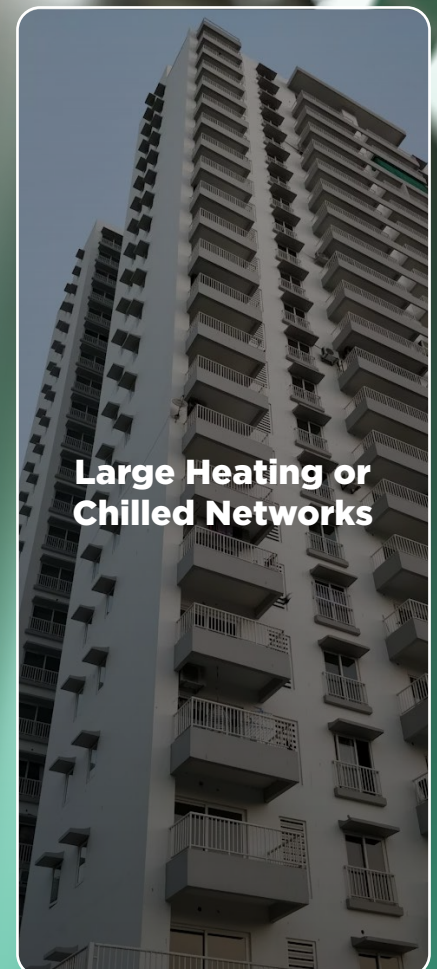
Engineered for Safe, Efficient Water Treatment

The **VEXO™ D-POT®** is a high-quality stainless steel shot feeder designed for chemical dosing into closed-loop heating and cooling systems without interrupting flow or system operation. Its innovative curved, fatigue-resistant vessel design improves durability and eliminates dead-legs in line with the latest **BSRIA BG50/2021** (UK-based regulation) recommendations.

Key Product Advantages

- **No downtime**, dose chemicals without system shutdown.
- **High-grade 304 stainless steel** vessel, fittings, and tundish.
- **Fatigue-resistant construction** improves long-term resilience.
- **Left or right-hand installation** for flexible positioning.
- **Rated to 150 PSI**, compliant with **ASME BPVC VIII Div. 1**.
- **5-year repair or replacement warranty** against manufacturing defects.

Applications



HOW IT WORKS, WARRANTY & TECHNICAL SPECIFICATIONS

How it Works - Quick Safe Chemical Dosing

The VEXO™ D-POT® allows controlled chemical addition while pumps remain running. Its clear tundish entry point and manual air vent simplify the dosing sequence.

Simplified Dosing Summary

1. Isolate the vessel.
2. Safely drain the vessel.
3. Open tundish isolation valve.
4. Add chemicals via the tundish (not exceeding vessel capacity).
5. Vent air via the manual vent.
6. Close tundish isolation valve.
7. Reopen vessel isolation valves to introduce treated water back into the system.

5-Year Warranty

All D-POT® units include a 60-month repair or replacement warranty on manufacturing defects.

Available Sizes

2 US Gallon Product Code: **NA304DPOT2**

5 US Gallon Product Code: **NA304DPOT5**

Material & Build

Vessel: 304 Stainless Steel, polished curve design

Valves, fittings & tundish: 304 Stainless Steel

Optional: Custom insulation jacket

Operating Conditions

Max Temperature: 248°F

Max Working Pressure: 2 Gal & 5 Gal - 145 PSI

Design Standard: ASME BPVC VIII Div. 1 (Rated 150 PSI)



Dimensions, Weight & Basic Information

MODEL	PRODUCT CODES	DIMENSIONS (INCHES)			CONNECTION SIZES (NPT)	FILLED WEIGHT (LBS)	MAXIMUM WORKING PRESSURE (PSI)
		Width	Height	Depth			
2 US Gal	NA304DPOT2	9.84	34.52	11.50	1/2"	44	145
5 US Gal	NA304DPOT5	11.81	37.09	13.27	1/2"	68.5	145



Contact Us

Web: www.vexoint.com

Email: sales.usa@vexoint.com

Call: **+1 (800) 917-6735**

VEXO North America

1875 Dewey Avenue, Benton Harbor,
MI 49022, United States