

D-POT[®]

DOSING POT UNIT



General Information VEXO® D-POT®?

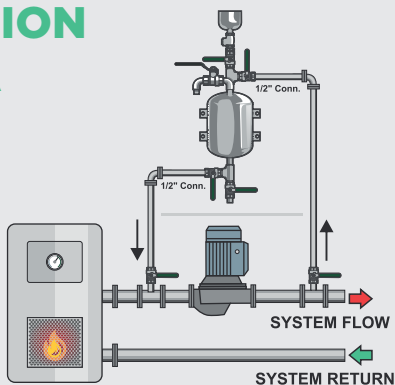
Dosing Pots are installed in a closed system to enable water treatment chemicals to be added to the system without the need to shut down the flow or operation of the system.

The VEXO® D-POT® provides a quality, durable and cost effective stainless steel vessel with innovative fatigue resistant curved design which can be installed in a left or right handed configuration and is fully compliant with the latest BSRIA BG50/2021 recommendations to avoid dead-legs.

The VEXO® D-POT® has a 5 year (60 Months) repair or replacement warranty to cover any manufacturing defects. The warranty is extended to 6 years if using X-PO10 inhibitor.

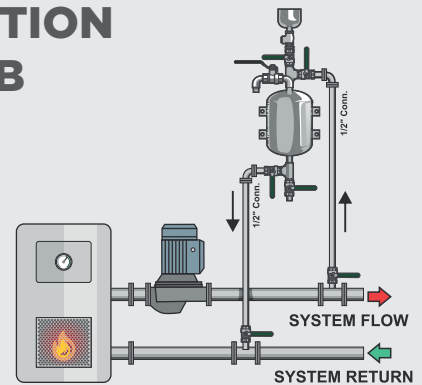
CONNECTION OPTION A

- ☒ ACCEPTABLE
- ☒ ADVISEABLE
- ☒ MAINTAINED THROUGH-FLOW
- ☒ BSRIA COMPLIANT



CONNECTION OPTION B

- ☒ ACCEPTABLE
- ☒ ADVISEABLE
- ☒ MAINTAINED THROUGH-FLOW
- ☒ BSRIA COMPLIANT



VEXO® D-POT® Specifications

Range Name

VEXO D-POT Stainless Steel Dosing Pot

Sizes

3.5L, 6L, 11L, 15L, 20L & 25L

Parts & Materials

Stainless Steel fatigue resistant curved vessel
Stainless Steel fittings and Tundish
Valve size 1/2" BSP
Polished Stainless Steel finish to vessel
Optional bespoke insulation jacket

Operating Conditions

Maximum Working Temperature: **120°C**
Maximum Working Pressure:
3.5L, 6L, 11L & 15L = **10BAR**
20L & 25L = **7BAR**

Pressure Equipment Directive

All VEXO® D-POTs are designed & manufactured in accordance with PED 2014/68/EU



VEXO® D-POT® Dimensions

USE THE SIZE AND WEIGHT CHART BELOW TO CHOOSE THE CORRECT D-POT®

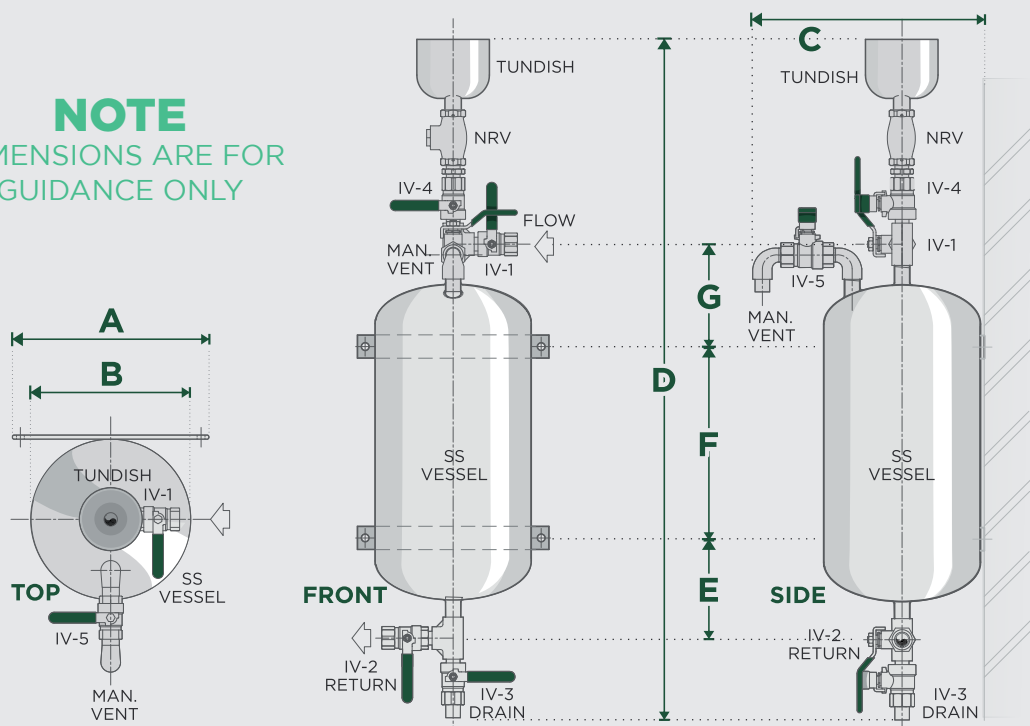


1. THE WALL STRUCTURE, FIXINGS & BOLTS SHOULD CARRY THE WEIGHT OF A FILLED VESSEL
2. ENSURE SUFFICIENT SPACE IS AVAILABLE ABOVE THE TUNDISH TO ADD CHEMICALS
3. ENSURE SUFFICIENT SPACE BELOW THE DRAIN FOR A COLLECTION VESSEL



D-POTS ARE DESIGNED TO BE INSTALLED INTERNALLY WITHIN A BUILDING AND TO AVOID RISK OF FREEZING AND COMPONENT DAMAGE. IF INSTALLING EXTERNALLY THE D-POT SHOULD BE MOUNTED WITHIN A WEATHERPROOF ENCLOSURE AND INSULATED TO AVOID FREEZING OTHERWISE THE WARRANTY WILL BE VOIDED

NOTE
DIMENSIONS ARE FOR
GUIDANCE ONLY



MODEL	PRODUCT CODES	DIMENSIONS (MM)							CONNECTION SIZES (BSP)	FILLED WEIGHT (KG)	MAXIMUM WORKING PRESSURE (BAR)
		REFER TO CORRESPONDING LETTERS IN ABOVE DRAWING									
		A	B	C	D	E	F	G			
3.5 Litre	VDP-3.5	210	190	255	694	135	80	135	½"	8.5	10
6 Litre	VDP-6	250	230	292	717	135	100	135	½"	13	10
11 Litre	VDP-11	250	230	292	877	141	250	141	½"	20	10
15 Litre	VDP-15	300	280	337	842	154	190	154	½"	24.5	10
20 Litre	VDP-20	300	280	337	942	154	290	154	½"	31	7
25 Litre	VDP-25	300	280	337	1092	154	440	154	½"	39	7

COMPONENT	DISPOSAL METHOD
Unit	Recycle - scrap metal